

# JCEM

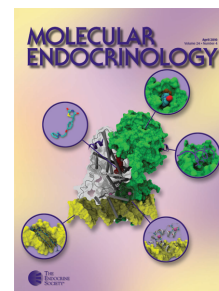
THE JOURNAL  
OF CLINICAL  
ENDOCRINOLOGY  
& METABOLISM

## Hexoneogenesis in the Human Breast during Lactation

Agneta L. Sunehag, Kathryn Louie, Jessica L. Bier, Stelios Tigas and Morey W. Haymond

J. Clin. Endocrinol. Metab. 2002 87: 297-301, doi: 10.1210/jc.87.1.297

To subscribe to *Journal of Clinical Endocrinology & Metabolism* or any of the other journals published by The Endocrine Society please go to: <http://jcem.endojournals.org/subscriptions/>



# Hexoneogenesis in the Human Breast during Lactation

AGNETA L. SUNEHAG, KATHRYN LOUIE, JESSICA L. BIER, STELIOS TIGAS, AND  
MOREY W. HAYMOND

*Department of Pediatrics, Children's Nutrition Research Center, U.S. Department of Agriculture/Agricultural Research Service, Baylor College of Medicine, Houston, Texas 77030*

Lactose is the major osmotic agent in milk. Therefore, lactose synthesis indirectly regulates milk volume. The aim of this study was to determine the source of glucose and galactose in lactose. Six healthy lactating women were studied twice, during a 24-h fast and during ingestion of a mixed macronutrient drink (Sustacal) using [U-<sup>13</sup>C]glucose and [2-<sup>13</sup>C]glycerol. Six additional lactating women were studied on one single occasion during ingestion of glucose labeled with [1-<sup>13</sup>C]glucose.

Using the ratios of [<sup>13</sup>C<sub>6</sub>] enrichments of glucose in lactose and plasma glucose and that of galactose in lactose and plasma glucose, we determined that  $98 \pm 3\%$  of glucose and  $68 \pm 7\%$  of galactose in lactose were derived from plasma

glucose in the fed state, and  $72 \pm 4$  and  $51 \pm 3\%$ , respectively, after a 24-h fast. Virtually identical results ( $97 \pm 6$  and  $64 \pm 4\%$ , respectively) were obtained during the glucose feeding study. On the basis of the [<sup>13</sup>C<sub>1</sub>] enrichment of glucose and galactose in lactose (derived from [2-<sup>13</sup>C]glycerol), glycerol contributes to the production of galactose but not glucose within the breast.

Thus, plasma glucose is an important source of lactose, but significant amounts of glucose and galactose in lactose are generated within the breast, a process denoted hexoneogenesis. In this process, glycerol is a precursor for milk galactose but not glucose. (*J Clin Endocrinol Metab* 87: 297–301, 2002)

LACTOSE IS THE major osmotic agent in milk, and therefore, mammary gland lactose synthesis indirectly regulates milk volume (1–3). In humans, lactose is a very important constituent in milk because it provides approximately 40% of the caloric intake of a newborn infant (4).

On the basis of studies in ruminants, the primary source of milk lactose is thought to be plasma glucose. Other than a study on the impact of glucose and insulin on milk production (5), to our knowledge, the precursor substrates that are used in lactose synthesis in humans have not been explored. Studies of plasma glucose uptake across the mammary gland in ruminants demonstrate that sufficient amounts of glucose are taken up to account for nearly all of the carbon required for lactose synthesis (1). Using [U-<sup>14</sup>C]glucose, direct evidence was provided that plasma glucose is the primary precursor for lactose synthesis in cows (1, 6, 7) but provided only 80% of the lactose carbon in perfused goat mammary gland (1, 6, 7). In these latter studies, all of the glucose in lactose was derived from plasma glucose, but only 60–80% of the galactose. Thus, the galactose appearing in milk in ruminants is most likely the result of conversion of plasma-derived glucose to galactose via UDP glucose phosphorylase and UDP galactose 4 epimerase (8). However, some portion of galactose is reported to be derived from acetate and glycerol carbon (1, 9). These data from ruminants raise the provocative concept that a significant portion of the galactose used in lactose synthesis is derived from a gluconeogenic-like process within the breast.

Furthermore, indirect lines of evidence from studies in mice and ruminants support the hypothesis that the lactating breast has the enzyme capacity for converting three carbon substrates to glucose-6-phosphate (10–13). In contrast to hu-

mans, ruminants produce and subsequently use short-chain fatty acids for glucose production. Therefore, it is difficult to extrapolate from ruminant studies to human physiology.

As a result, the present studies were performed to determine the source(s) of carbon for the glucose and galactose in milk lactose under both the fed and short-term fasting conditions. To determine the source(s) of milk lactose in humans requires the use of stable isotope tracers. To our knowledge, no published method exists for the independent measurement of isotopomer distribution in milk glucose and galactose. Therefore, a method of analysis was developed. We hypothesize that: 1) during nutrient absorption dietary carbohydrate, via plasma glucose, is the primary source of lactose carbon; but 2) in the fasted state, the human breast is capable of *de novo* synthesis of both glucose and galactose.

## Materials and Methods

### Materials

Lactase [*Aspergillus oryzae*, 5,500 o-nitrophenyl β-D-galactopyranoside U/g] was obtained from ICN Biochemicals, Inc. (Irvine, CA), and β-galactosidase (*A. oryzae*, 9,600 U/g, and *Escherichia coli*, grade VIII, 740,000 U/g) was obtained from Sigma-Aldrich Corp. (St. Louis, MO). BaOH (0.3 N), ZnSO<sub>4</sub> (0.3 N), D-(+)-glucose (dextrose, corn sugar), D-(+)-galactose, and D-lactose (monohydrate) were purchased from Sigma-Aldrich Corp.. All organic solvents were HPLC grade. [1-<sup>13</sup>C]galactose (99 atom %) and deuterium oxide (99 atom %) were purchased from Cambridge Isotope Laboratory (Andover, MA).

Glucose concentrations were determined using a Biochemical Analyzer, model 2700 Select (Yellow Springs Instruments, Yellow Springs, OH). Galactose concentrations were determined using a Glucose and L-Lactate Analyzer, model 2300 Stat+, retrofitted to read galactose (Yellow Springs Instruments).

### Study and protocol design

**Subjects.** The study was approved by the Institutional Review Board for Human Subject Research at Baylor College of Medicine (Houston, TX). Twelve normal lactating women were recruited for this study after

Abbreviations: CNRC, Children's Nutrition Research Center; GCMS, gas chromatography mass spectrometry; USDA, U.S. Department of Agriculture.

written consent was obtained from each of them. They are the same lactating subjects reported Tigas *et al.* (14). The subjects were studied in two protocols (see below). Before being accepted in the study, they underwent a general physical examination and had normal hemoglobin and screening tests for liver and renal function and a negative pregnancy test. The ages of the subjects averaged  $27 \pm 3$  yr (protocol 1) and  $30 \pm 2$  yr (protocol 2); the weights were  $69 \pm 5$  and  $67 \pm 3$  kg, and body mass index was  $26 \pm 3$  and  $25 \pm 3$  kg/m<sup>2</sup>, respectively. The women were between 6 wk and 3 months postpartum. All infants were healthy, born at term, and exclusively breast-fed at the time of the study. Each lactating woman was provided iron supplementation over the course of these studies, if not already taking iron as part of her postpartum management prescribed by her obstetricians.

**Protocol 1: Sustacal feeding and short-term fasting.** In protocol 1, each woman was studied on two occasions, in random order, once in the fed state and once during a 24-h fast. The studies were separated by 2–4 wk. Each woman and her infant were admitted to the Metabolic Research Unit of the Children's Nutrition Research Center (CNRC) or the General Clinical Research Center on the evening before study. At 1800 h on the evening of admission, two iv catheters were introduced in the antecubital fossae or forearm veins under EMLA (Astra Pharmaceuticals, Wayne, PA) cream analgesia, one for isotope infusion and the other (in the contralateral arm) for blood sampling. On both study occasions, subjects were fed a supper meal of 10 kcal/kg at 1800 h and were subsequently fasted (except for water) overnight. At 0600 h, after the overnight fast, baseline milk and blood samples (5 ml) were obtained, and the subjects received the following: 1) an oral dose of deuterium oxide (0.1 g/kg) to measure the rapidity of equilibration of maternal body water with milk water to estimate the existence, if any, of dead volume of milk in the breast; 2) a primed constant rate infusion of [U-<sup>13</sup>C]glucose to measure the fraction of galactose and glucose in lactose derived from the plasma glucose space; and 3) a primed constant rate infusion of [2-<sup>13</sup>C]glycerol to measure the fraction of glucose and galactose in milk lactose derived from plasma glycerol (14). In the fed protocol, the women drank 90 kcal (90 ml) of Sustacal (Mead Johnson Nutritional, Evansville, IN) every 30 min between 0600 h and 1800 h, providing a total of approximately 2160 kcal and approximately 33  $\mu\text{mol} \cdot \text{kg}^{-1} \cdot \text{min}^{-1}$  of carbohydrate. During the fasting study, the women drank an equal volume of water but received no calories from 0600 h until 1800 h on the day of study.

In addition to the baseline samples, blood and milk samples (6–10 ml) were collected at 3-h intervals. The infants were breast-fed approximately every 3 h (from both breasts at each nursing), and milk samples were collected before and immediately after each feeding.

In protocol 1, we attempted to maintain energy neutrality and used a commercially available preparation containing unlabeled complex carbohydrate. As a result, we were unable to estimate the contribution of dietary glucose to milk production. Thus, protocol 2 was designed to address this issue.

**Protocol 2: Oral glucose load.** Each woman was studied on one occasion using a protocol identical to that outlined above except: 1) she received oral glucose enriched with [1-<sup>13</sup>C]glucose every 15 min at a rate of 33  $\mu\text{mol} \cdot \text{kg}^{-1} \cdot \text{min}^{-1}$  instead of Sustacal but no <sup>2</sup>H<sub>2</sub>O, [U-<sup>13</sup>C]glucose, or [2-<sup>13</sup>C]glycerol was administered; and 2) the duration of study was 9 h.

### Plasma analysis

Enrichments of [1-<sup>13</sup>C]glucose, [U-<sup>13</sup>C]glucose, and the glucose isotopomers, were measured by gas chromatography mass spectrometry (GCMS) using the penta-acetate derivative and of [2-<sup>13</sup>C]glycerol using the triacetate derivative as previously described (15). Deuterium enrichments in both plasma and milk (defatted) water were measured using isotope ratio mass spectrometry (16). All measurements were made in the Stable Isotope Core Laboratory of the CNRC.

### Milk analyses

**Defatting milk.** A homogeneous sample of milk (1 ml) is pipetted into microcentrifuge tubes (1.5-ml conical, screw-capped tubes, CEL Associates Inc., Houston, TX). The tube is capped and placed upside down in a 20-ml scintillation vial and centrifuged for 10 min at 3,000 rpm (900×

g) at 4 C in a refrigerated centrifuge (Beckman Coulter model J-6B, Beckman Coulter Instruments, Inc., Palo Alto, CA). Without disturbing the layer of milk fat, the supernatant is carefully decanted into a new microcentrifuge tube.

**Deproteinizing milk.** To a 1.5-ml microcentrifuge tube, 50  $\mu\text{l}$  defatted milk, 450  $\mu\text{l}$  deionized water, 500  $\mu\text{l}$  BaOH, and 500  $\mu\text{l}$  ZnSO<sub>4</sub> are added. The tubes are capped tightly, vortexed, and centrifuged for 10 min at 3,000 rpm (900× g) at 4 C. The defatted, deproteinized supernatant is used for lactose hydrolysis.

**Lactose hydrolysis.** Defatted, deproteinized milk (150  $\mu\text{l}$ ) and 50  $\mu\text{l}$  (0.55 U)  $\beta$ -galactosidase in a final buffer concentration of 93 mM sodium phosphate (pH 7.3), 1 mM MgCl<sub>2</sub>, and 112 mM 2-mercaptoethanol are added to 1.5-ml microcentrifuge tubes. The reaction mix is incubated at 37 C for 1 h.

**Derivatization of hydrolyzed products.** Fifty microliters of each hydrolyzed sample are aliquotted into 4-ml vials and taken to dryness under nitrogen at room temperature. Fifty microliters of acetic anhydride/pyridine (2:1) are added to each sample, and the samples are heated to 60 C for 10 min or allowed to sit overnight at room temperature. Then, the samples are dried under nitrogen at room temperature, reconstituted in 100  $\mu\text{l}$  ethyl acetate, and transferred to autosampler vials.

**GCMS analysis.** The derivatized samples are analyzed using a Hewlett-Packard Co. GCMS (GC 6890, MS 5973) with a SP-17 column (30 m × 0.25 mm × 0.25  $\mu\text{m}$ ; Supelco, Inc., Bellefonte, PA). The conditions for the GC are the following: injector, 250 degree (splitless injection of samples); oven, 70 C for 1.0 min; ramp, 30 C/min to 280 C; hold at 280 C for 5 min. The positive ionization mode is employed with methane as the reagent gas and selected monitoring of m/z 331–337 for glucose and galactose. The SP-17 column separates the  $\alpha$ - and  $\beta$ -anomers of glucose and galactose. We have used the  $\alpha$ -anomers of both sugars for the analyses. These peaks are very well separated, with a difference in retention time of approximately 0.25 min.

### Calculations

Standard product precursor relationships were calculated. The percentage of product, *i.e.* glucose and galactose in milk lactose, that was derived from the precursor pool (plasma glucose), *i.e.* percentage milk sugar ← plasma glucose, was calculated using the following equation:

$$\% \text{ milk sugar} \leftarrow \text{plasma glucose} = \left( \frac{[^{13}\text{C}_6]_{\text{milk sugar}}}{[^{13}\text{C}_6]_{\text{plasma glucose}}} \right) \times 100 \text{ (protocol 1)}$$

or

$$\% \text{ milk sugar} \leftarrow \text{plasma glucose} = \left( \frac{[^{13}\text{C}_1]_{\text{milk sugar}}}{[^{13}\text{C}_1]_{\text{plasma glucose}}} \right) \times 100 \text{ (protocol 2),}$$

where milk sugar is either the glucose or the galactose moiety in lactose.

[<sup>13</sup>C<sub>6</sub>] enrichments are derived from the [U-<sup>13</sup>C]glucose tracer (protocol 1) and [<sup>13</sup>C<sub>1</sub>] enrichments from the [1-<sup>13</sup>C]glucose tracer (protocol 2).

The contribution from glycerol to milk glucose and galactose produced from other sources than plasma glucose via processes within the breast (% milk sugar ← glycerol) was calculated using the following equation:

$$\% \text{ milk sugar} \leftarrow \text{glycerol} = \left[ 1 - \left( \frac{[^{13}\text{C}_6]_{\text{milk sugar}}}{[^{13}\text{C}_6]_{\text{plasma glucose}}} \right) \times \left( \frac{[^{13}\text{C}_1]_{\text{milk sugar}}}{[^{13}\text{C}_1]_{\text{plasma glucose}}} \right) - \left( \frac{[^{13}\text{C}_6]_{\text{milk sugar}}}{[^{13}\text{C}_6]_{\text{plasma glucose}}} \right) \right] \times 100.$$

[<sup>13</sup>C<sub>1</sub>] ratios greater than [<sup>13</sup>C<sub>6</sub>] ratios indicate a contribution from glycerol.

### Statistical analysis

All data are expressed as mean ± SE. The product/precursor relationships were compared using a paired *t* test.

## Results

The results of the maternal adaptation to fasting and feeding are provided in the accompanying manuscript (14). The results of this manuscript focus exclusively on the method of analysis of the milk carbohydrates and on the impact of feeding and fasting on the product precursor relationships between the milk and the maternal plasma space.

### Reproducibility of the lactose analysis

A variety of methodologies for milk hydrolysis were attempted, including commercial over-the-counter lactase preparations. Initial results were always promising, but over time the enrichments in glucose would decrease, indicating dilution by unlabeled glucose. Eventually, we identified that these products were stabilized with starch (and reacted to iodine). The procedure described above (using  $\beta$ -galactosidase from *E. coli*) was found to be stable and reproducible over time. The coefficient of variation for preparation and GCMS analyses of 10 aliquots of a sample was 5% for glucose and 6% for galactose. The SP-17 GC column separates the  $\alpha$ - and  $\beta$ -anomers of glucose and galactose, respectively, in the following order:  $\alpha$ -galactose,  $\alpha$ -glucose,  $\beta$ -glucose, and  $\beta$ -galactose (Fig. 1). Figure 1 depicts the GCMS total ion chromatogram of a sample of glucose and galactose standards and a sample of hydrolyzed milk, demonstrating a complete separation of the glucose and galactose moieties.

### Equilibration of $^2\text{H}_2\text{O}$ in milk

Figure 2 depicts the results of the time course of deuterium enrichment in plasma and breast milk water during the fed and fasted conditions. Within 3 h of the oral administration of the  $^2\text{H}_2\text{O}$ , the plasma and milk water enrichments of  $^2\text{H}$  were essentially identical and remained so throughout the study period, thus eliminating the possibility of any significant pools of preformed milk.

### Effects of Sustacal and fasting (protocol 1)

Analysis of milk samples obtained before and after each feeding gave essentially identical values (data not shown). The values obtained after the feedings were used because,

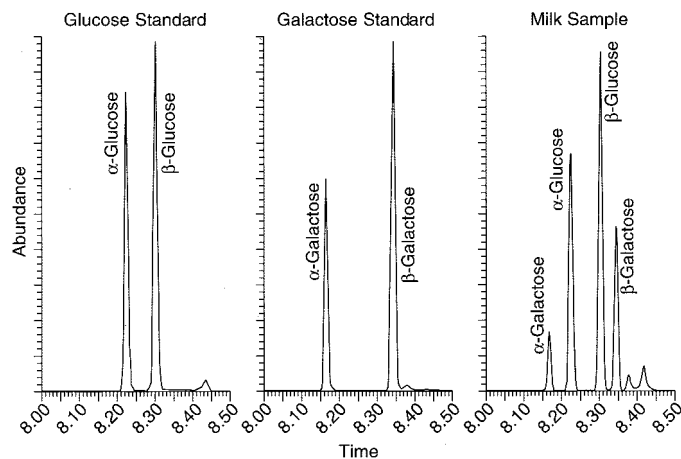


FIG. 1. Total ion chromatogram of the penta-acetate derivatives of glucose and galactose standards and hydrolyzed milk lactose.

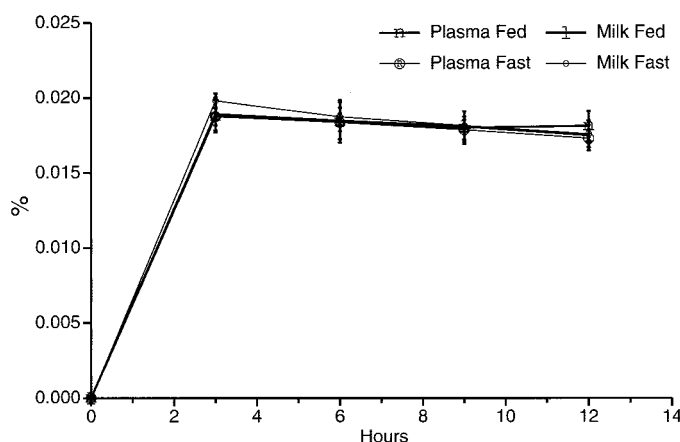


FIG. 2. Enrichment of  $^2\text{H}_2\text{O}$  in plasma and milk water in the fed and short-term fasted states.

**TABLE 1.** The  $^{13}\text{C}_1$  (derived from  $[2-^{13}\text{C}]$ glycerol) and  $^{13}\text{C}_6$  (derived from  $[\text{U}-^{13}\text{C}]$ glucose) enrichments (%) in plasma glucose, milk glucose, and milk galactose represent the mean of the data obtained after the 9- and 12-h feedings in the fed and fasted limb of protocol 1

		[U- <sup>13</sup> C]glucose		[2- <sup>13</sup> C]glycerol	
		Isotopomer		Isotopomer	
Fed					
Plasma glucose	[ <sup>13</sup> C <sub>6</sub> ]	0.57 ± 0.05	[ <sup>13</sup> C <sub>1</sub> ]	2.99 ± 0.65	
Milk glucose	[ <sup>13</sup> C <sub>6</sub> ]	0.51 ± 0.04	[ <sup>13</sup> C <sub>1</sub> ]	2.04 ± 0.37	
Milk galactose	[ <sup>13</sup> C <sub>6</sub> ]	0.36 ± 0.04	[ <sup>13</sup> C <sub>1</sub> ]	3.38 ± 0.58	
Fasted					
Plasma glucose	[ <sup>13</sup> C <sub>6</sub> ]	1.33 ± 0.09	[ <sup>13</sup> C <sub>1</sub> ]	7.62 ± 0.65	
Milk glucose	[ <sup>13</sup> C <sub>6</sub> ]	0.98 ± 0.10	[ <sup>13</sup> C <sub>1</sub> ]	4.79 ± 0.70	
Milk galactose	[ <sup>13</sup> C <sub>6</sub> ]	0.68 ± 0.07	[ <sup>13</sup> C <sub>1</sub> ]	5.97 ± 0.66	

theoretically, they would contain the most recently synthesized lactose. Table 1 provides the enrichments of  $^{13}\text{C}_1$  (from  $[2-^{13}\text{C}]$ glycerol) and  $^{13}\text{C}_6$  (from  $[\text{U}-^{13}\text{C}]$ glucose) in plasma glucose, milk glucose, and milk galactose between 9–12 h of Sustacal feeding or 21–24 h of fasting. The ratios between  $^{13}\text{C}_6$  milk glucose (galactose) and  $^{13}\text{C}_6$  plasma glucose as well as the  $^{13}\text{C}_1$  ratios were calculated for each individual subject. On the basis of the means of these ratios, we demonstrated that, during feeding, the enrichment of  $^{13}\text{C}_6$  in glucose derived from the hydrolysis of lactose was  $98 \pm 3\%$  of the  $^{13}\text{C}_6$ glucose enrichment in plasma (Fig. 3). The enrichment of  $^{13}\text{C}_6$ galactose was  $68 \pm 7\%$  that of the plasma  $^{13}\text{C}_6$ glucose. During short-term fasting (24 h), the fractions of glucose and galactose derived from plasma glucose were  $72 \pm 4$  and  $51 \pm 3\%$ , respectively (Fig. 3). Thus, collectively, plasma glucose contributes 83% of the substrate for lactose synthesis in the fed condition but only 62% during short-term fasting.

If glycerol is not a substrate for production of glucose and galactose in lactose within the breast, we would predict that the ratios between the enrichment of  $^{13}\text{C}_1$  (derived from the  $[2-^{13}\text{C}]$ glycerol tracer) in milk glucose/plasma glucose and milk galactose/plasma glucose would be equal to the corresponding  $^{13}\text{C}_6$  ratios. During both feeding and fasting, the ratios between the  $^{13}\text{C}_1$  milk glucose and  $^{13}\text{C}_1$  plasma glucose ( $76 \pm 5$  and  $64 \pm 5\%$ , respectively) and the corresponding  $^{13}\text{C}_6$  ratios (see above) were not different, dem-



onstrating that essentially no plasma glycerol contributed to the glucose formed within the breast and incorporated into lactose. In contrast, during both feeding and fasting, the ratios between [ $^{13}\text{C}_1$ ] milk galactose and [ $^{13}\text{C}_1$ ] plasma glucose ( $130 \pm 16$  and  $80 \pm 6\%$ , respectively) were significantly higher ( $P < 0.01$ ) than the corresponding [ $^{13}\text{C}_6$ ] ratios (see above), demonstrating that glycerol contributed significantly to the synthesis of galactose within the human breast (Fig. 4). The means of the individual ratios differ slightly from those that can be calculated using the mean enrichments provided in Tables 1 and 2.

#### Effects of oral glucose (protocol 2)

During ingestion of labeled glucose alone, the ratios between the [ $^{13}\text{C}_1$ ] enrichment (from the [ $1\text{-}^{13}\text{C}$ ]glucose derived from the meal) in milk glucose/plasma glucose and in galactose/plasma glucose were virtually identical ( $97 \pm 6$  and  $64 \pm 4\%$ , respectively) to those observed with [ $\text{U-}^{13}\text{C}$ ]glucose described above. We have previously demonstrated that in these women 94% of glucose appearing in plasma was derived from the meal glucose (based on the [ $1\text{-}^{13}\text{C}$ ] enrichments in plasma glucose and that of the glucose drinks) (14). The above milk data demonstrate that 83% of lactose is de-

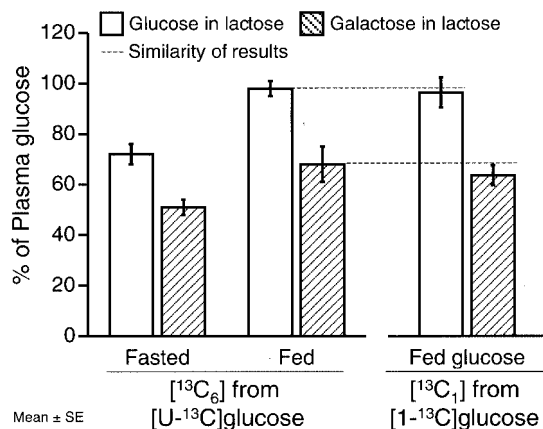


FIG. 3. The fraction of milk galactose and glucose derived from plasma glucose in the fed and fasted conditions in protocol 1 (based on the [ $^{13}\text{C}_6$ ] enrichments from the [ $\text{U-}^{13}\text{C}$ ]glucose tracer); during glucose feeding in protocol 2 (based on the [ $^{13}\text{C}_1$ ] enrichments from the [ $1\text{-}^{13}\text{C}$ ]glucose tracer in the glucose drink).

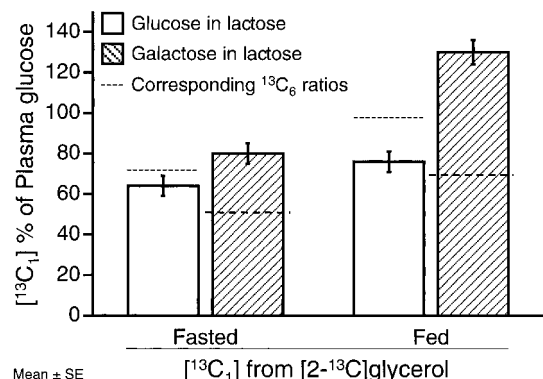


FIG. 4. The contribution from glycerol based on the [ $^{13}\text{C}_1$ ] enrichment from the [ $2\text{-}^{13}\text{C}$ ] glycerol tracer (protocol 1).

**TABLE 2.** The [ $^{13}\text{C}_1$ ] enrichments (%) (derived from [ $1\text{-}^{13}\text{C}$ ]glucose) in plasma glucose, milk glucose, and milk galactose represent the data obtained after the 9-h feeding in protocol 2

Tracer/isotopomer	[ $1\text{-}^{13}\text{C}$ ]glucose
Plasma glucose [ $^{13}\text{C}_1$ ]	$2.37 \pm 0.07$
Milk glucose [ $^{13}\text{C}_1$ ]	$2.29 \pm 0.16$
Milk galactose [ $^{13}\text{C}_1$ ]	$1.52 \pm 0.11$

rived from plasma glucose. Thus, during the continuously fed condition, we would estimate that dietary carbohydrate contributes 78% ( $0.94 \times 0.83 \times 100$ ) of the substrate necessary to produce lactose.

#### Discussion

The present studies demonstrate that in humans the vast majority of lactose (83%) is derived from the plasma glucose pool during feeding of a mixed macronutrient drink or with glucose alone. However, we have also demonstrated that the human breast is capable of synthesizing both the glucose and galactose moieties of lactose from substrates other than plasma glucose. In the fed condition, 20% of lactose is derived from substrates other than plasma glucose, and this fraction is increased to 40% during short-term fasting. Surprisingly, we observed unequal labeling of the glucose and galactose moieties in lactose suggesting different pools and/or processes for *de novo* synthesis of glucose and galactose. Under conditions of nutrient ingestion, nearly all of the glucose in lactose is derived from the plasma glucose space, but only 68% of galactose. These results are similar to those observed in ruminants (6, 7). Neville *et al.* (5) observed, under non-steady state conditions during an insulin clamp, that milk galactose enrichment was only approximately 70% of that of the plasma glucose. Again, these results are consistent with those of the present study. During short-term fasting, the fraction of glucose and galactose in lactose derived from plasma glucose decreased to 72 and 51%, respectively. Conversely, 28% of the glucose and 49% of the galactose in lactose were synthesized from substrates other than plasma glucose. We have denoted this *de novo* synthesis of glucose and galactose in the breast hexoneogenesis, implying that this process is similar to hepatic gluconeogenesis, except that we doubt that any free glucose is released back into the maternal circulation due to the low activity of glucose-6-phosphatase in lactating mammary tissue (8, 12, 17), and that another hexose, galactose, is produced in this process. Whether this is the maximum fraction of lactose that can be synthesized by hexoneogenesis is unknown and will require additional studies employing a longer duration of fasting. However, significant use of other hexoneogenic substrates by the breast during fasting would potentially spare maternal glucose for her use.

Several explanations might be considered for the dilution of the plasma glucose label measured in the milk glucose and galactose. The first is the possibility of hidden pools of pre-formed milk within the breast. This seems unlikely because of the turnover of milk with each feeding. In addition, using a small oral dose of deuterated water, we demonstrated that plasma and milk water were in complete equilibrium after 3 h. The dilution in galactose, in both the fed and short-term

fasted states, suggests that under both conditions a substantial amount of the carbon is derived from nonglucose substrates, presumably entering the breast from the plasma. Although we cannot delineate the contributions of amino acids, lactate, and pyruvate to these processes, we have demonstrated that glycerol contributes substantially to the galactose formed by hexoneogenesis and that this contribution is most likely from direct uptake of the glycerol into the breast rather than the uptake of maternal glucose derived from glycerol via gluconeogenesis in the mother's liver and/or kidney. Comparing the ratios of the enrichments of [ $^{13}\text{C}_1$ ] (derived from [ $2\text{-}^{13}\text{C}$ ]glycerol) and [ $^{13}\text{C}_6$ ] (derived from [ $\text{U-}^{13}\text{C}$ ]glucose) between milk galactose and plasma glucose (in protocol 1), we demonstrated that under fed and fasted conditions, glycerol accounted for about 24 and 14%, respectively, of the galactose formed within the mammary gland from other sources than plasma glucose. This would suggest that about 76 and 86%, respectively, of the galactose generated via hexoneogenesis must be derived from other substrates than glycerol.

In contrast to galactose, it is of great interest that the glycerol contributed little or nothing to the glucose found in lactose. This again is consistent with studies in bovine mammary gland incubation studies and perfused goat mammary gland (9, 12). However, it is important to note that during fasting the glucose in lactose was also derived from substrates other than maternal plasma glucose. We presumed that the substrates available for the formation of glucose-1-phosphate for the subsequent conversion to galactose would have been the same pool of glucose-1-phosphate available as a precursor of glucose. The glycerol labeling of galactose, but not glucose in milk lactose, demonstrates that these hexoses are being derived from at least two separate pools, presumably within the breast. This is both reassuring and disturbing at the same time; it is reassuring in that little or no glucose-6-phosphatase is present in at least bovine (8) and rat (17) mammary tissue and disturbing in the sense that we have no clear idea as to the precursor pool for glucose produced within the breast for lactose synthesis. One consideration is that of intramammary gland glycogen. However, to our knowledge no such pool exists in sufficient quantity to dilute the glucose in lactose over the time of these studies. Elucidation of the source(s) of this unlabeled glucose in lactose formed within the mammary gland will require further study.

In the fed state (under the conditions of these studies), we conclude that oral glucose is an important source of substrate for both the glucose and galactose moieties in human milk. If one can extrapolate from the ingestion of oral glucose (labeled with [ $1\text{-}^{13}\text{C}$ ]glucose) to that of a normal mixed meal, our data would suggest that up to 75% of the milk lactose is derived directly from the meal carbohydrate. In conclusion, the results from these studies demonstrate that although adequate carbohydrate supply is important for lactogenesis,

processes independent of glucose availability are required to maintain lactose production in both the fed and short-term fasted conditions.

### Acknowledgments

We acknowledge and thank the technicians in our laboratory (Lucinda Clarke, Patricia Breitenfelder, and Shaji Chacko), our nurse coordinator (Andrea Dotting Jones, R.N.), Dr. William Wong and his staff, the staff in the Metabolic Research Unit and Kitchen, and the staff of the General Clinical Research Unit who greatly facilitated the execution of these studies.

Received July 13, 2001. Accepted October 15, 2001.

Address all correspondence and requests for reprints to: Morey W. Haymond, M.D., CNRC, 1100 Bates Street, Houston, Texas 77030. E-mail: mhaymond@bcm.tmc.edu.

This project was supported by NIH Grants RO1DK 55478 and HD 37857, U.S. Department of Agriculture (USDA) Cooperative Agreement 58-6250-6-001, and Baylor General Clinical Research Center Grant MO1-RR-00188-34.

This work is a publication of the USDA/Agricultural Research Service, CNRC, Department of Pediatrics, Baylor College of Medicine, Houston, TX. The contents of this publication do not necessarily reflect the views of policies of the USDA, nor does mention of trade names, commercial products, or organizations imply endorsement from the U.S. Government.

### References

1. Mepham TB 1987 The composition of milk. In: Mepham TB, ed. Physiology of lactation. Philadelphia: Open University Press; 30–50
2. Davies DT, Holt C, Christie WW 1983 The composition of milk. In: Mepham TB, ed. Biochemistry of lactation. Amsterdam and New York: Elsevier; 1–11
3. Neville MC 1990 The physiological basis of milk secretion. *Ann NY Acad Sci* 586:1–11
4. Neville MC 1999 Physiology of lactation. *Clin Perinatol* 26:251–279
5. Neville MC, Hay Jr WW, Fennessey P 1990 Physiological significance of the concentration of human milk glucose. *Protoplasma* 159:118–128
6. Linzell JL 1974 The use of isotopes in the study of milk secretion. *Proc Nutr Soc* 33:17–23
7. Kleiber M, Black AL, Brown MA, Baxter CF, Luick JR, Stadtman FH 1955 Glucose as a precursor of milk constituents in the intact dairy cow. *Biochem J* 92:36
8. Mepham TB 1987 Biosynthesis of milk. In: Mepham TB, ed. Physiology of lactation. Philadelphia: Open University Press; 71–93
9. Scott RA, Bauman DE, Clark JH 1975 Cellular gluconeogenesis by lactating bovine mammary tissue. *J Dairy Sci* 59:50–56
10. Jones DH, Raymer DM, Schoelen SL 1989 The activity of phosphoenolpyruvate carboxykinase throughout the lactation cycle of the guinea pig mammary gland. *Proc Soc Exp Biol Med* 192:16–22
11. Garcia-Ruiz JP, Lobato MF, Ros M, Moreno FJ 1983 Presence of cytosolic phosphoenolpyruvate carboxykinase activity in rat mammary gland. *Enzyme* 30:265–268
12. Jiménez J, Page-Penuelas A, Ros M, Garcia-Ruiz JP, Moreno FJ 1987 Glycogenic pathway in the rat mammary gland. *Int J Biochem* 19:201–204
13. Arthur PG, Kent JC, Hartmann PE 1994 Metabolites of lactose synthesis in milk from diabetic and non-diabetic women during lactogenesis II. *J Pediatr Gastroenterol Nutr* 19:100–108
14. Tigas S, Suneag A, Haymond MW 2001 Metabolic adaptation to feeding and fasting during lactation in humans. *J Clin Endocrinol Metab* 87:000–000
15. Suneag AL, Haymond MW, Schanler RJ, Reeds PJ, Bier DM 1999 Gluconeogenesis in very low birth weight infants receiving parenteral nutrition. *Diabetes* 48:791–800
16. Wong WW, Clarke LL, Llaurador M, Klein PD 1992 A new zinc product for the reduction of water in physiological fluids to hydrogen gas for  $^2\text{H}/^1\text{H}$  isotope ratio measurements. *Eur J Clin Nutr* 46:69–71
17. Threadgold LC, Kuhn NJ 1979 Glucose-6-phosphate hydrolysis by lactating rat mammary gland. *Int J Biochem* 10:683–685